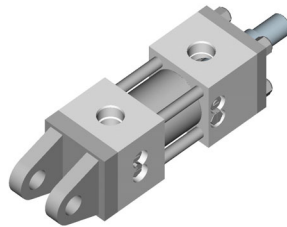


**Page Description**

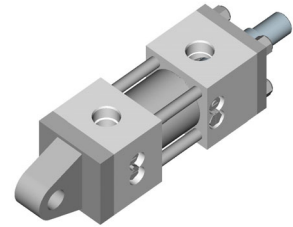
1	Contents
2	Features Description

**Mounting Dimensions**

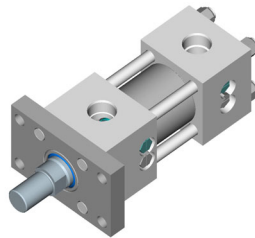
3	<b>C</b>	Clevis Mount
3	<b>E</b>	Pivot Eye
4	<b>R</b>	Rod End Rectangular Flange
4	<b>B</b>	Blind End Rectangular Flange
5	<b>W</b>	Self-aligning Eye
5	<b>T</b>	Mid Trunnion
6		Accessories
7		Accessories, Rod End Styles
8		Accessories
9		Technical Data
10		Technical Data, Torque Specs
back-cover		Cylinder Nomenclature



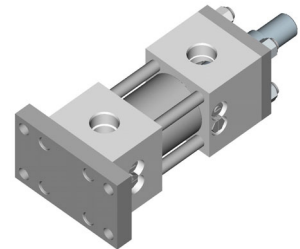
3

*Clevis Mount*

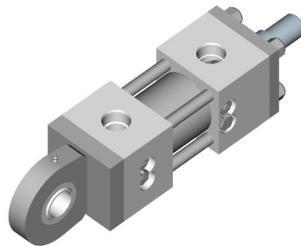
3

*Pivot Eye*

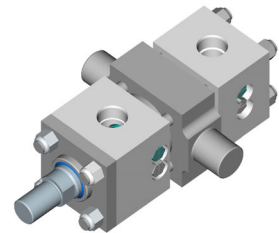
4

*Rod End Rectangular Flange*

4

*Blind End Rectangular Flange*

5

*Self-Aligning Eye*

5

*Mid Trunnion*

***“for Severe Applications...”***

## DESIGN OVERVIEW

The XH-Series Cylinders take over where regular NFPA hydraulic cylinders leave off. The XH Series has been designed to serve the applications where high speed and severe shock are present. It provides long cushions for smooth deceleration of fast moving loads while still providing fast breakaway.

## FEATURES

Rated to 3500 psi working pressure.

Oversize Mounts and Tie Rods.

Extra large heads allow for larger ports and longer cushions.

Longer Cushions profiled to provide constant cushioning force to reduce shock and bounce.

Triple Ball Checks at each end for fast breakaway. Needle valve is located at position 4.

Hard Chrome Plated Piston Rod (CPO) C1045/C1050 material. Optional Induction Hardened Chrome Plated (I.H.C.P) Piston Rods and optional Rod Stud.

Cast Iron Piston Rings to cope with pressure spikes.

Oversize pinholes - on Pin-mounted styles.

Thicker lugs and wider spacing for increased bearing area.

## MOUNTING STYLES

Clevis Mount.

Pivot Eye Mount.

Rod End Rectangular Flange Mount.

Blind End Rectangular Flange Mount.

Self-Aligning Eye Mount.

Mid Trunnion Mount.

Note: rear pin-mounted styles have detachable mounts.

## APPLICATIONS

The robust design of the XH series cylinder makes it suitable for applications where shock and impact are present. The large pin diameters and wide lug spacing provide ample bearing area for mounting longevity. Oversized tie rods ensure the cylinder heads stay rigidly located even with extreme extension loads. The cushion profile provides a more consistent deceleration, by maintaining an even back pressure during deceleration.

The XH series is also suitable for use in high-speed applications. The larger heads accept large SAE Flange ports for high flow. Triple ball checks allow for fast break out of the cushion area, while the longer cushion provides ample deceleration time.

## Westcoast Cylinders Inc.:

The Company has been manufacturing high quality, reliable ROYAL cylinders for over 40 years. Production started with a single cylinder design and expanded to a full range of multi-use, hydraulic, pneumatic cylinders and accessories.

## Quality:

WCI is a leader in the design and manufacture of custom heavy duty cylinders. The materials, machinery and tools used to produce our products are continuously being updated. Our cylinders are built to the highest standards utilizing the latest technology and processes.

## Delivery:

WCI maintains a large range of stock parts which gives us the flexibility to respond to your needs in emergency situations. Please contact the factory to expedite your special requirements.

## Westcoast Cylinders Inc.

225 Edworthy Way  
New Westminster BC  
Canada V3L 5G4

Telephone: 604-527-1120

Facsimile: 604-527-1170

Phone Toll Free: 1-877-637-6925

Fax Toll Free: 1-866-527-1170

email: [sales@royalcylinders.com](mailto:sales@royalcylinders.com)

***...High Speeds"***

