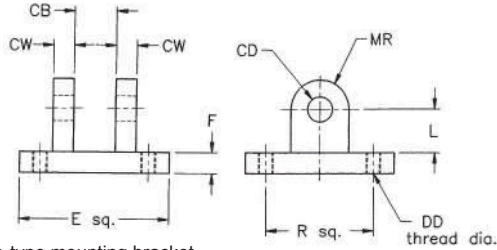


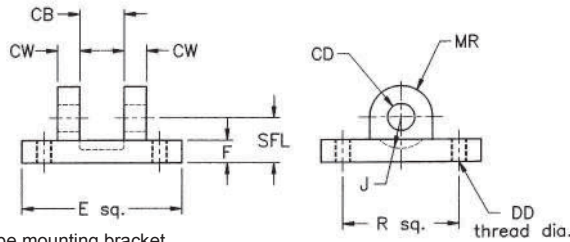
Detachable Clevis—MP2 Mount (NFPA)



Mounts on H-Series cylinder and adapts to HM eye-type mounting bracket

PART	HMP2-15T	HMP2-2T	HMP2-25T	HMP2-32T	HMP2-4T	HMP2-5T	HMP2-6T	HMP2-7T	HMP2-8T
CB	0.765	1.281	1.265	1.515	2.032	2.531	2.531	3.032	3.032
CD	1/2	3/4	3/4	1	1 3/8	1 3/4	2	2 1/2	3
CW	1/2	5/8	5/8	3/4	1	1 1/4	1 1/4	1 1/2	1 1/2
DD	3/8-24	1/2-20	1/2-20	5/8-18	5/8-18	7/8-14	1-14	1 1/8-12	1 1/4-12
E	2 1/2	3	3 1/2	4 1/2	5	6 1/2	7 1/2	8 1/2	9 1/2
F	3/8	5/8	5/8	3/4	7/8	7/8	1	1	1
FL	1 1/8	1 7/8	1 7/8	2 1/4	3	3 1/8	3 1/2	4	4 1/4
MR	1/2	13/16	3/4	1	1 3/8	1 3/4	2	2 1/2	3
R	1 5/8	2 3/16	2 9/16	3 1/4	3 13/16	4 15/16	5 3/4	6 19/32	7 1/2
LOAD CAPACITY (lb)	6750	14000	12600	20200	37000	59000	67500	101200	121500

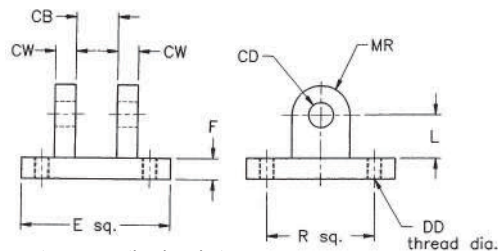
Detachable Clevis—MP1 Mount (NFPA)



Mounts on cylinder and adapts to HM eye-type mounting bracket

PART	LMP1-15	LMP1-2	LMP1-25	LMP1-32	LMP1-4	LMP1-5	LMP1-6
CB	0.76	0.76	0.76	1.26	1.26	1.26	1.51
CD	1/2	1/2	1/2	3/4	3/4	3/4	1
CW	1/2	1/2	1/2	5/8	5/8	5/8	3/4
DD	1/4-28	5/16-24	5/16-24	3/8-24	3/8-24	1/2-20	1/2-20
E	2	2 1/2	3	3 3/4	4 1/2	5 1/2	6 1/2
F	3/8	3/8	3/8	5/8	5/8	5/8	3/4
J	5/8	5/8	5/8	7/8	7/8	7/8	1 1/8
SFL	3/4	3/4	3/4	1 1/4	1 1/4	1 1/4	1 1/2
MR	5/8	5/8	5/8	7/8	7/8	7/8	1 1/8
R	1.43	1.84	2.19	2.76	3.32	4.10	4.88

Detachable Clevis—MP2 Mount (NFPA)



Mounts on L-Series Cylinder and adapts to HM eye-type mounting bracket

PART	LMP2-15	LMP2-2	LMP2-25	LMP2-32	LMP2-4	LMP2-5	LMP2-6
CB	0.76	0.76	0.76	1.26	1.26	1.26	1.51
CD	1/2	1/2	1/2	3/4	3/4	3/4	1
CW	1/2	1/2	1/2	5/8	5/8	5/8	3/4
DD	1/4-28	5/16-24	5/16-24	3/8-24	3/8-24	1/2-20	1/2-20
E	2	2 1/2	3	3 3/4	4 1/2	5 1/2	6 1/2
F	3/8	3/8	3/8	5/8	5/8	5/8	3/4
L	3/4	3/4	3/4	1 1/4	1 1/4	1 1/4	1 1/2
MR	5/8	5/8	5/8	7/8	7/8	7/8	1 1/8
R	1.43	1.84	2.19	2.76	3.32	4.10	4.88